



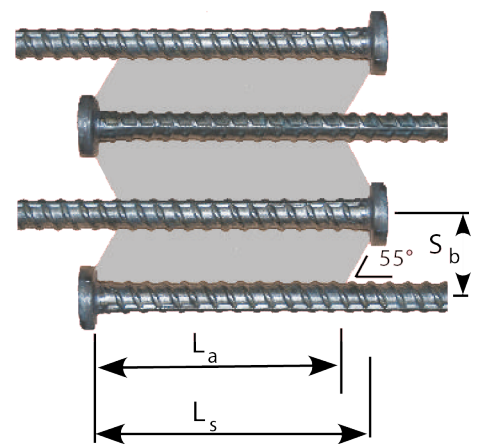
REBAR SUPPLY

# HRC 555 Series Headed Lap

## Advantages

- Short Lap Splice Great for closure pours and other locations not permitting the length of conventional lap splices.
- Field Friendly Alignment and length tolerances can easily be accommodated for both designer and contractor. Fixed heads eliminate any potential field sensitive installation concerns. Sufficient lap length is easily visually inspected.
- HRC Quality The Ultimate performance of HRC 555 headed bars can be fabricated and tested locally.
- Economical Cost effective fabrication and installation

Design parameters per ICC-ES ESR-2935:



$$L_s = 1.3(L_a + S_b \tan 35^\circ)$$

$S_b$  = Centerline spacing between lapped headed bars, inches.

$L_a$  = The greater of  $8d_b$  or 6in. minimum anchorage length.

TABLE - HEADED LAP SPLICES

Bar size	#4	#5	#6	#7	#8	#9	#10	#11	
Minimum Anchorage Length, $L_a$ [in]	6.00	6.00	6.00	7.00	8.00	9.02	10.16	11.28	
Center spacing, $S_b = 1.65 d_b$ [in]	0.83	1.03	1.24	1.44	1.65	1.86	2.10	2.33	
Minimum Lap Length, $L_s$ [in]	8.55	8.74	8.93	10.41	11.90	13.43	15.12	16.78	
Comment	Minimum spacing (edge of head touch spliced bar)								
Center spacing, $S_b = 2.65 d_b$ [in]	1.33	1.66	1.99	2.32	2.65	2.99	3.37	3.74	
Minimum Lap Length, $L_s$ [in]	9.01	9.31	9.61	11.21	12.81	14.45	16.27	18.07	
Comment	(Up to) 1.0db clear space between edge of head and spliced bar								
HRC 555 Head dimensions	$*T_{min}$ [in]	0.25	0.31	0.38	0.44	0.50	0.56	0.64	0.70
	D [in]	1.14	1.42	1.69	1.97	2.25	2.56	2.87	3.19
	$A_{brg}$ [sq.in]	0.82	1.27	1.80	2.45	3.18	4.14	5.20	6.43

\* Head thickness should be no larger than bar diameter.



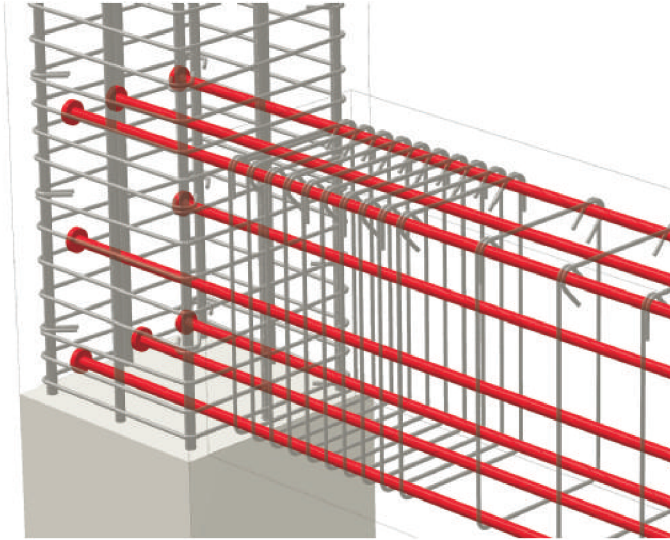
Islandia, New York  
Office: (516) 918-8813  
Mail: sales@nycrebarsupply.com  
www.nycrebarsupply.com

HRC Performance  
Local Quality Fabrication

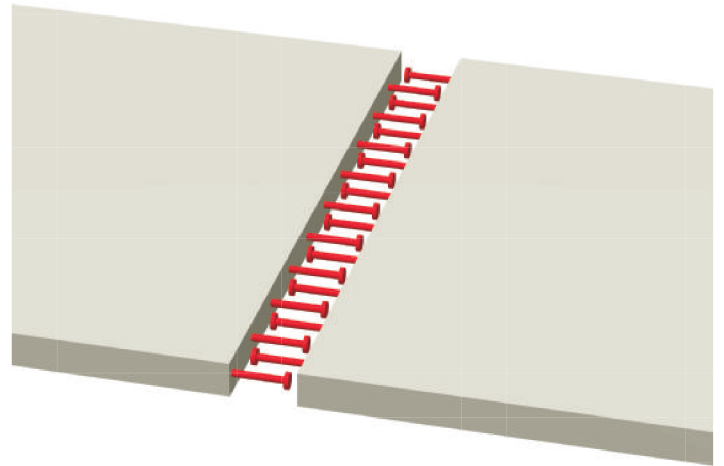


REBAR SUPPLY  
MBE/WBE Certified

# HRC 555 Series Typical Applications



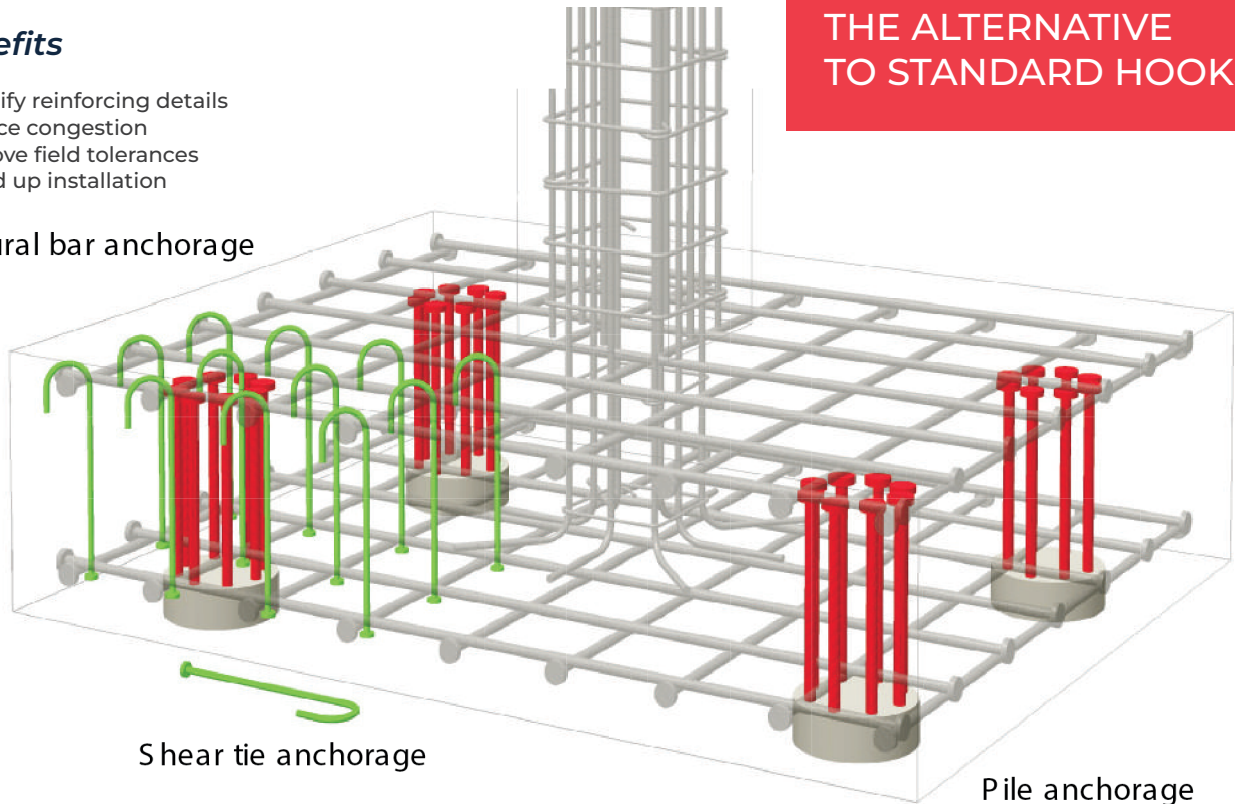
Beam-Column Connection



## Benefits

- Simplify reinforcing details
- Reduce congestion
- Improve field tolerances
- Speed up installation

## Flexural bar anchorage



THE ALTERNATIVE  
TO STANDARD HOOKS

Shear tie anchorage

Pile anchorage

Islandia, New York  
Office: (516) 918-8813  
Mail: sales@nycrebarsupply.com  
www.nycrebarsupply.com

HRC Performance  
Local Quality Fabrication



REBAR SUPPLY  
MBE/WBE Certified